

RESOLUTION NO. 2018-243

**A RESOLUTION OF THE CITY COUNCIL OF THE CITY OF ELK GROVE
APPROVING THE FINAL MAP FOR SUBDIVISION NO. 13-016.02,
SHELDON PARK ESTATES NORTH UNIT 2 (CEQA EXEMPT)**

WHEREAS, the City of Elk Grove (City) approved the Tentative Map for Sheldon Park Estates Project (EG-13-016) on May 28, 2014; and

WHEREAS, consistent with the approved Tentative Map, Capital Realtors, Inc., Profit Sharing Plan, submitted to the City for approval a Final Map for Subdivision No. 13-016.02, Sheldon Park Estates North Unit 2, which is the second phase of the previously-approved Tentative Map; and

WHEREAS, staff has reviewed the proposed Final Map and finds it to be technically correct and that all applicable Final Map conditions of approval have been satisfied; and

WHEREAS, the City has determined that the Final Map is statutorily exempt from the California Environmental Quality Act (CEQA) Statutory Exemptions, Title 14 of the California Code of Regulations Section 15268(b)(3) Ministerial Projects, approval of final subdivision maps.

NOW, THEREFORE, BE IT RESOLVED by the City Council of the City of Elk Grove as follows:

- 1) The location and configuration of the lots to be created by this Final Map for Subdivision No. 13-016.02, Sheldon Park Estates North-Unit 2 substantially comply with the previously-approved Tentative Map; and
- 2) The Final Map is exempt from the California environmental Quality Act (CEQA), Statutory Exemptions, Title 14 of the California Code of Regulations Section 15268(b)(3) Ministerial projects, approval of final subdivision maps; and
- 3) The City Council of the City of Elk Grove, pursuant to Government Code Section 66458, hereby approves the Final Map for Subdivision No. 13-016.02, Sheldon Park Estates North Unit 2, a copy of which is hereby attached as Exhibit A and made part of this Resolution;

PASSED AND ADOPTED by the City Council of the City of Elk Grove this 14th day of November 2018



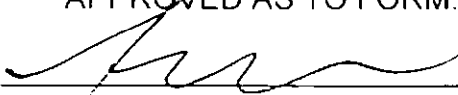
STEVE LY, MAYOR of the
CITY OF ELK GROVE

ATTEST:

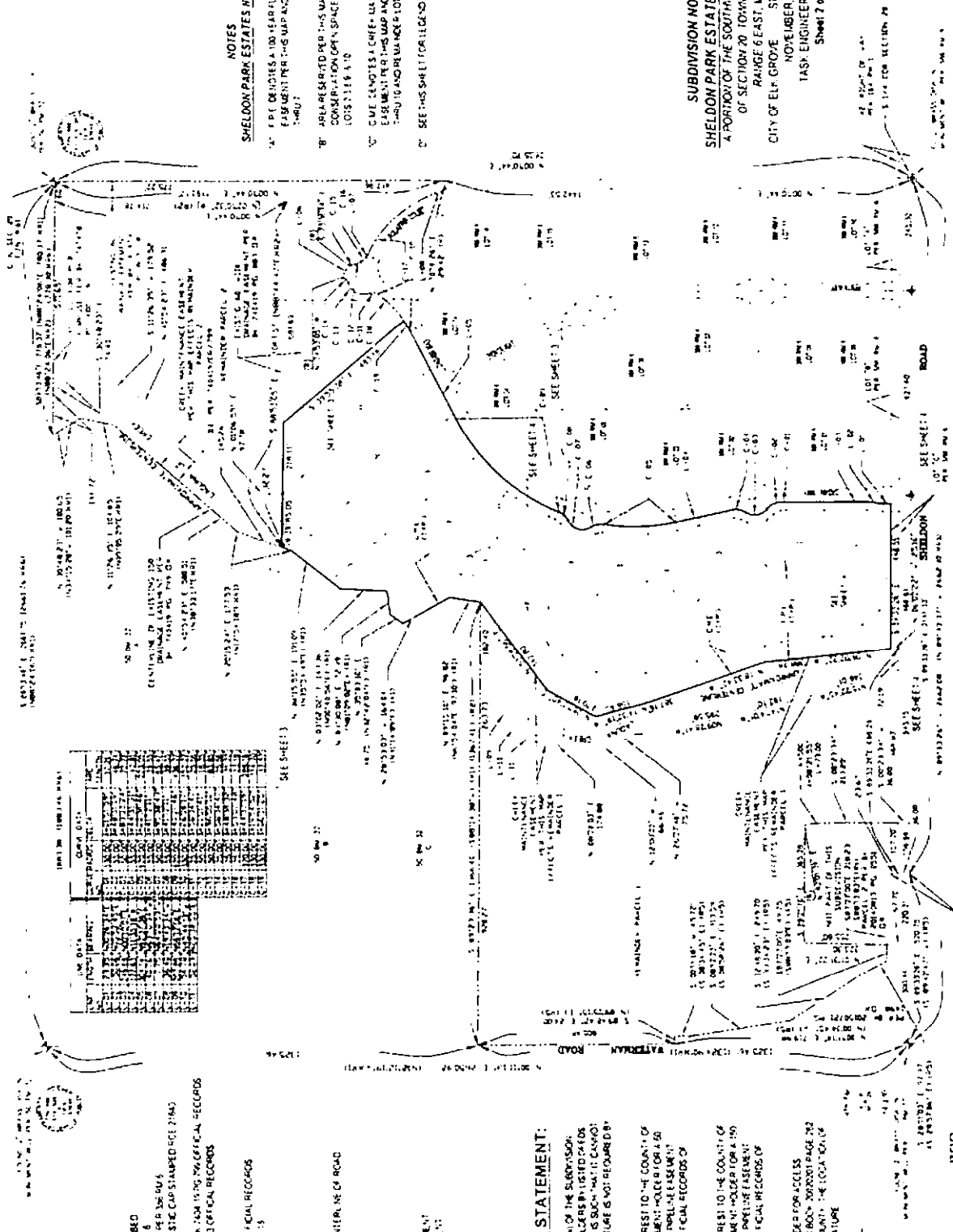


JASON LINDGREN, CITY CLERK

APPROVED AS TO FORM:



JONATHAN P. HOBBS,
CITY ATTORNEY



NOTES

SHELDON PARK ESTATES NORTH - UNIT 2

1' E.P.C. NOTES & 100-YEAR FLOOD PLAIN EASEMENT PER THIS MAP AND EFFECTS LOTS 1-180.

2' AREA RESERVED PER THIS MAP AS WELL AS LOTS CONSIDERATION OF SPACE AND EFFECTS LOTS 1-180.

3' C.U.E. DEVOTES A CREEK - MAINTENANCE EASEMENT PER THIS MAP AND EFFECTS LOTS 1-180 AND UNIMPROVED LOTS 1-180.

4' SEE THIS SHEET FOR LEGEND

SUBDIVISION NO. 13-016-02

SHELDON PARK ESTATES NORTH - UNIT 2

A PORTION OF THE SOUTHWEST ONE-QUARTER

OF SECTION 20, TOWNSHIP 7 NORTH

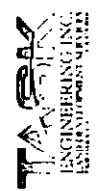
RANGE 6 EAST, MDB & M

CITY OF ELF GROVE, STATE OF CALIFORNIA

NOVEMBER, 2018

TASK ENGINEERING INC

Sheet 2 of 4



LEGEND:

- 1 FOLIATION AS DESCRIBED
- 2 FOLIATION PER THIS MAP
- 3 FOLIATION PER THIS MAP
- 4 FOLIATION PER THIS MAP
- 5 FOLIATION PER THIS MAP
- 6 FOLIATION PER THIS MAP
- 7 FOLIATION PER THIS MAP
- 8 FOLIATION PER THIS MAP
- 9 FOLIATION PER THIS MAP
- 10 FOLIATION PER THIS MAP
- 11 FOLIATION PER THIS MAP
- 12 FOLIATION PER THIS MAP
- 13 FOLIATION PER THIS MAP
- 14 FOLIATION PER THIS MAP
- 15 FOLIATION PER THIS MAP
- 16 FOLIATION PER THIS MAP
- 17 FOLIATION PER THIS MAP
- 18 FOLIATION PER THIS MAP
- 19 FOLIATION PER THIS MAP
- 20 FOLIATION PER THIS MAP
- 21 FOLIATION PER THIS MAP
- 22 FOLIATION PER THIS MAP
- 23 FOLIATION PER THIS MAP
- 24 FOLIATION PER THIS MAP
- 25 FOLIATION PER THIS MAP
- 26 FOLIATION PER THIS MAP
- 27 FOLIATION PER THIS MAP
- 28 FOLIATION PER THIS MAP
- 29 FOLIATION PER THIS MAP
- 30 FOLIATION PER THIS MAP
- 31 FOLIATION PER THIS MAP
- 32 FOLIATION PER THIS MAP
- 33 FOLIATION PER THIS MAP
- 34 FOLIATION PER THIS MAP
- 35 FOLIATION PER THIS MAP
- 36 FOLIATION PER THIS MAP
- 37 FOLIATION PER THIS MAP
- 38 FOLIATION PER THIS MAP
- 39 FOLIATION PER THIS MAP
- 40 FOLIATION PER THIS MAP
- 41 FOLIATION PER THIS MAP
- 42 FOLIATION PER THIS MAP
- 43 FOLIATION PER THIS MAP
- 44 FOLIATION PER THIS MAP
- 45 FOLIATION PER THIS MAP
- 46 FOLIATION PER THIS MAP
- 47 FOLIATION PER THIS MAP
- 48 FOLIATION PER THIS MAP
- 49 FOLIATION PER THIS MAP
- 50 FOLIATION PER THIS MAP
- 51 FOLIATION PER THIS MAP
- 52 FOLIATION PER THIS MAP
- 53 FOLIATION PER THIS MAP
- 54 FOLIATION PER THIS MAP
- 55 FOLIATION PER THIS MAP
- 56 FOLIATION PER THIS MAP
- 57 FOLIATION PER THIS MAP
- 58 FOLIATION PER THIS MAP
- 59 FOLIATION PER THIS MAP
- 60 FOLIATION PER THIS MAP
- 61 FOLIATION PER THIS MAP
- 62 FOLIATION PER THIS MAP
- 63 FOLIATION PER THIS MAP
- 64 FOLIATION PER THIS MAP
- 65 FOLIATION PER THIS MAP
- 66 FOLIATION PER THIS MAP
- 67 FOLIATION PER THIS MAP
- 68 FOLIATION PER THIS MAP
- 69 FOLIATION PER THIS MAP
- 70 FOLIATION PER THIS MAP
- 71 FOLIATION PER THIS MAP
- 72 FOLIATION PER THIS MAP
- 73 FOLIATION PER THIS MAP
- 74 FOLIATION PER THIS MAP
- 75 FOLIATION PER THIS MAP
- 76 FOLIATION PER THIS MAP
- 77 FOLIATION PER THIS MAP
- 78 FOLIATION PER THIS MAP
- 79 FOLIATION PER THIS MAP
- 80 FOLIATION PER THIS MAP
- 81 FOLIATION PER THIS MAP
- 82 FOLIATION PER THIS MAP
- 83 FOLIATION PER THIS MAP
- 84 FOLIATION PER THIS MAP
- 85 FOLIATION PER THIS MAP
- 86 FOLIATION PER THIS MAP
- 87 FOLIATION PER THIS MAP
- 88 FOLIATION PER THIS MAP
- 89 FOLIATION PER THIS MAP
- 90 FOLIATION PER THIS MAP
- 91 FOLIATION PER THIS MAP
- 92 FOLIATION PER THIS MAP
- 93 FOLIATION PER THIS MAP
- 94 FOLIATION PER THIS MAP
- 95 FOLIATION PER THIS MAP
- 96 FOLIATION PER THIS MAP
- 97 FOLIATION PER THIS MAP
- 98 FOLIATION PER THIS MAP
- 99 FOLIATION PER THIS MAP
- 100 FOLIATION PER THIS MAP

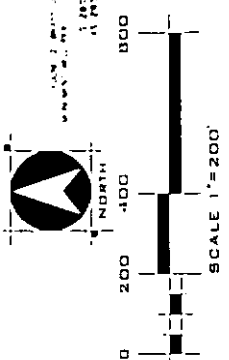
SIGNATURE OMISSION STATEMENT:

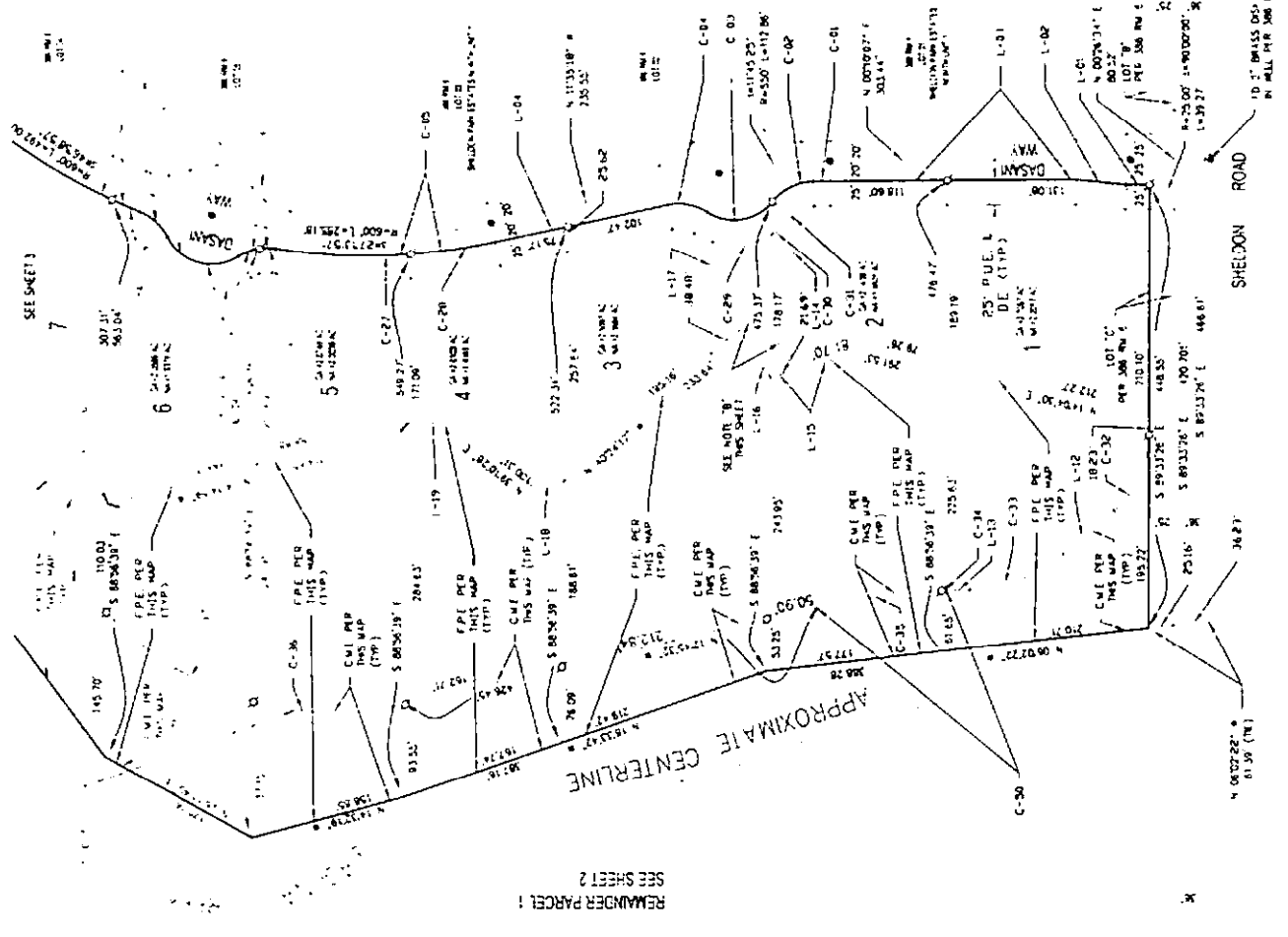
PURSUANT TO SECTION 640000 OF THE SUBDIVISION MAP ACT, THE FOLLOWING EASEMENT HOLDERS WHOSE NAMES HAVE BEEN OMITTED AS THE INTEREST IS SUCH THAT IT CANNOT BE PLEN TO A TITLE AND WHOSE SIGNATURE IS NOT REQUIRED BY THE LOCAL AGENT:

CITY OF ELF GROVE SUCCESSION IN INTEREST TO THE COUNTY OF SACRAMENTO BY INCORPORATION EASEMENT HOLDER FOR A 50 FOOT WIDE DRAINAGE CANAL DITCH OR DRAINAGE EASEMENT RECORDED IN BOOK 28419 PAGE 883 OFFICIAL RECORDS OF SACRAMENTO COUNTY.

CITY OF ELF GROVE SUCCESSION IN INTEREST TO THE COUNTY OF SACRAMENTO BY INCORPORATION EASEMENT HOLDER FOR A 50 FOOT WIDE DRAINAGE CANAL DITCH OR DRAINAGE EASEMENT RECORDED IN BOOK 28419 PAGE 791 OFFICIAL RECORDS OF SACRAMENTO COUNTY.

PACIFIC BELL WIRELESS (EASEMENT) HOLDER FOR ACCESS PURPOSES BY DOCUMENT RECORDED IN BOOK 200200 PAGE 792 OFFICIAL RECORDS OF SACRAMENTO COUNTY. THE LOCAL AGENT'S SIGNATURE IS SUFFICIENT FOR THIS EASEMENT.





CHAIN NO	BEARINGS	PLACES	LEG	BEARING	REMARKS
C-01	S 89°33'28"		17.74	N 87°21'00"	
C-02	S 89°33'28"		17.74	N 87°21'00"	
C-03	S 89°33'28"		17.74	N 87°21'00"	
C-04	S 89°33'28"		17.74	N 87°21'00"	
C-05	S 89°33'28"		17.74	N 87°21'00"	
C-06	S 89°33'28"		17.74	N 87°21'00"	
C-07	S 89°33'28"		17.74	N 87°21'00"	
C-08	S 89°33'28"		17.74	N 87°21'00"	
C-09	S 89°33'28"		17.74	N 87°21'00"	
C-10	S 89°33'28"		17.74	N 87°21'00"	
C-11	S 89°33'28"		17.74	N 87°21'00"	
C-12	S 89°33'28"		17.74	N 87°21'00"	
C-13	S 89°33'28"		17.74	N 87°21'00"	
C-14	S 89°33'28"		17.74	N 87°21'00"	
C-15	S 89°33'28"		17.74	N 87°21'00"	
C-16	S 89°33'28"		17.74	N 87°21'00"	
C-17	S 89°33'28"		17.74	N 87°21'00"	
C-18	S 89°33'28"		17.74	N 87°21'00"	
C-19	S 89°33'28"		17.74	N 87°21'00"	
C-20	S 89°33'28"		17.74	N 87°21'00"	
C-21	S 89°33'28"		17.74	N 87°21'00"	
C-22	S 89°33'28"		17.74	N 87°21'00"	
C-23	S 89°33'28"		17.74	N 87°21'00"	
C-24	S 89°33'28"		17.74	N 87°21'00"	
C-25	S 89°33'28"		17.74	N 87°21'00"	
C-26	S 89°33'28"		17.74	N 87°21'00"	
C-27	S 89°33'28"		17.74	N 87°21'00"	
C-28	S 89°33'28"		17.74	N 87°21'00"	
C-29	S 89°33'28"		17.74	N 87°21'00"	
C-30	S 89°33'28"		17.74	N 87°21'00"	
C-31	S 89°33'28"		17.74	N 87°21'00"	
C-32	S 89°33'28"		17.74	N 87°21'00"	
C-33	S 89°33'28"		17.74	N 87°21'00"	
C-34	S 89°33'28"		17.74	N 87°21'00"	
C-35	S 89°33'28"		17.74	N 87°21'00"	
C-36	S 89°33'28"		17.74	N 87°21'00"	
C-37	S 89°33'28"		17.74	N 87°21'00"	
C-38	S 89°33'28"		17.74	N 87°21'00"	
C-39	S 89°33'28"		17.74	N 87°21'00"	
C-40	S 89°33'28"		17.74	N 87°21'00"	
C-41	S 89°33'28"		17.74	N 87°21'00"	
C-42	S 89°33'28"		17.74	N 87°21'00"	
C-43	S 89°33'28"		17.74	N 87°21'00"	
C-44	S 89°33'28"		17.74	N 87°21'00"	
C-45	S 89°33'28"		17.74	N 87°21'00"	
C-46	S 89°33'28"		17.74	N 87°21'00"	
C-47	S 89°33'28"		17.74	N 87°21'00"	
C-48	S 89°33'28"		17.74	N 87°21'00"	
C-49	S 89°33'28"		17.74	N 87°21'00"	
C-50	S 89°33'28"		17.74	N 87°21'00"	
C-51	S 89°33'28"		17.74	N 87°21'00"	

LINE NO	BEARINGS	LENGTH	REMARKS
L-01	S 89°33'28"	17.74	N 87°21'00"
L-02	S 89°33'28"	17.74	N 87°21'00"
L-03	S 89°33'28"	17.74	N 87°21'00"
L-04	S 89°33'28"	17.74	N 87°21'00"
L-05	S 89°33'28"	17.74	N 87°21'00"
L-06	S 89°33'28"	17.74	N 87°21'00"
L-07	S 89°33'28"	17.74	N 87°21'00"
L-08	S 89°33'28"	17.74	N 87°21'00"
L-09	S 89°33'28"	17.74	N 87°21'00"
L-10	S 89°33'28"	17.74	N 87°21'00"
L-11	S 89°33'28"	17.74	N 87°21'00"
L-12	S 89°33'28"	17.74	N 87°21'00"
L-13	S 89°33'28"	17.74	N 87°21'00"
L-14	S 89°33'28"	17.74	N 87°21'00"
L-15	S 89°33'28"	17.74	N 87°21'00"
L-16	S 89°33'28"	17.74	N 87°21'00"
L-17	S 89°33'28"	17.74	N 87°21'00"
L-18	S 89°33'28"	17.74	N 87°21'00"
L-19	S 89°33'28"	17.74	N 87°21'00"
L-20	S 89°33'28"	17.74	N 87°21'00"
L-21	S 89°33'28"	17.74	N 87°21'00"
L-22	S 89°33'28"	17.74	N 87°21'00"
L-23	S 89°33'28"	17.74	N 87°21'00"
L-24	S 89°33'28"	17.74	N 87°21'00"
L-25	S 89°33'28"	17.74	N 87°21'00"

REMAINDER PARCEL: SEE SHEET 2

APPROXIMATE CENTERLINE

10' ST. BRASS DGS BY WILL PER 308 RW 6

10' ST. BRASS DGS BY WILL PER 308 RW 6

10' ST. BRASS DGS BY WILL PER 308 RW 6

10' ST. BRASS DGS BY WILL PER 308 RW 6

10' ST. BRASS DGS BY WILL PER 308 RW 6

10' ST. BRASS DGS BY WILL PER 308 RW 6

10' ST. BRASS DGS BY WILL PER 308 RW 6

10' ST. BRASS DGS BY WILL PER 308 RW 6

10' ST. BRASS DGS BY WILL PER 308 RW 6

10' ST. BRASS DGS BY WILL PER 308 RW 6

10' ST. BRASS DGS BY WILL PER 308 RW 6

10' ST. BRASS DGS BY WILL PER 308 RW 6

10' ST. BRASS DGS BY WILL PER 308 RW 6

10' ST. BRASS DGS BY WILL PER 308 RW 6

10' ST. BRASS DGS BY WILL PER 308 RW 6

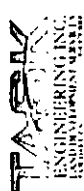
10' ST. BRASS DGS BY WILL PER 308 RW 6

10' ST. BRASS DGS BY WILL PER 308 RW 6

SUBDIVISION NO. 13-016.01
SHELDON PARK ESTATES NORTH - UNIT 2
A PORTION OF THE SOUTHWEST QUARTER
OF SECTION 20 TOWNSHIP 7 NORTH
RANGE 6 EAST N.D.B. 4 M

CITY OF ELI GROVE STATE OF CALIFORNIA
NOVEMBER, 2016
Sheet 4 of 4

SEE SHEET 2 FOR THE LEGEND AND FOR THE MONUMENTS



CERTIFICATION
ELK GROVE CITY COUNCIL RESOLUTION NO. 2018-243

STATE OF CALIFORNIA)
COUNTY OF SACRAMENTO) ss
CITY OF ELK GROVE)

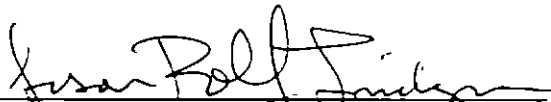
I, Jason Lindgren, City Clerk of the City of Elk Grove, California, do hereby certify that the foregoing resolution was duly introduced, approved, and adopted by the City Council of the City of Elk Grove at a regular meeting of said Council held on November 14, 2018 by the following vote:

AYES: COUNCILMEMBERS: Ly, Suen, Detrick, Hume, Nguyen

NOES: COUNCILMEMBERS: None

ABSTAIN: COUNCILMEMBERS: None

ABSENT: COUNCILMEMBERS: None



Jason Lindgren, City Clerk
City of Elk Grove, California